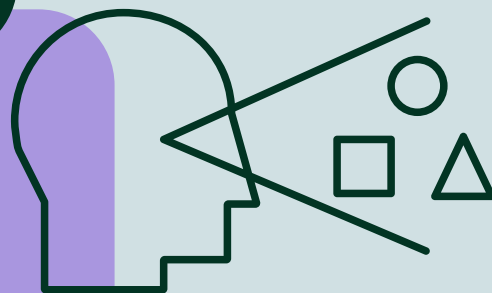


What is Visual Perception?

Visual perceptual skills pertain to how we make sense of and interpret visual information, organizing it into meaningful content.

Visual Discrimination

The ability to recognize similarities/differences between objects and patterns.



Sequential Memory

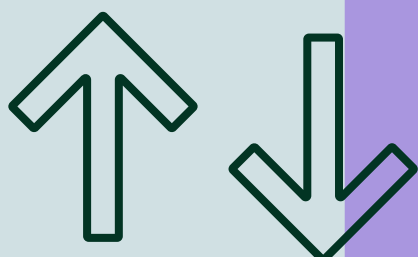
The ability to remember and repeat objects in the right order.

Visual Memory

The ability to recognize and recall shapes, objects, numbers, and letters by enabling the recording, storing, and retrieval of information.

Spatial Relationships

The ability to recognize the relationship between objects, as well as between objects and ourselves. It includes grasping concepts related to directionality, laterality, and orientation.



Form Constancy

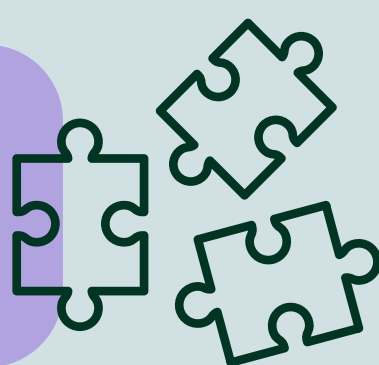
The ability to recognize that forms/objects are the same in different environments.

Figure Ground

The ability to filter out irrelevant visual stimuli and pick out/identify an object in different settings.

Visual Closure

The ability to notice and make sense of information using just a few details, without needing the whole story. Recognize objects even when they are partially occluded or incomplete.



What are the functional implications?

Visual Discrimination

Difficulties with visual discrimination can cause challenges in telling symbols, images, letters, shapes, numbers, or words apart, leading to frequent mix-ups of similar letters or words.

Sequential Memory

Difficulties with sequential memory may lead to challenges with tasks such as copying from the board, remembering numbers, spelling words correctly, recalling steps in a process, and reading efficiently.

Visual Memory

Difficulties with visual memory can affect a range of tasks, such as accurately copying from the board, retaining numbers, writing letters correctly, and recalling events in order.

Spatial Relationships

Difficulties with spatial relationships can affect the legibility of writing, resulting in reversed letters/numbers, inconsistent spacing between letters/words, errors in line alignment, and difficulties understanding spatial concepts.

Form Constancy

Difficulties with form constancy can lead to trouble recognizing letters and numbers when they appear in different fonts and identifying shapes when presented in various settings.

Figure Ground

Difficulties with figure-ground perception can make it challenging to identify key details when looking through information or reading, as well as spotting items in cluttered spaces."

Visual Closure

Difficulties with visual closure may impact a child's reading fluency and comprehension, impact their handwriting quality, and make it challenging to find things in their backpack or desk.